



# One time-connect abutments in different diameters in the posterior maxilla

Dr. Stavros Pelekanos

Practice limited to Prosthodontics and implant dentistry University of Athens, Greece

Dr. Ventseslav Stankov, DDS

Private practice, Plovdiv, Bulgaria

A healthy 55 year old female patient presented in the office with partial posterior edentulism in the second quadrant (missing premolars and molars).

After a clinical and radiographic examination, horizontal and vertical bone defects were diagnosed.

The treatment plan involved vertical and horizontal GBR, using a mixture of autogenous bone and xenograft, covered by a titanium reinforced non-resorbable membrane.

6 months post op, the membrane was removed and three MIS V3 implants were placed, replacing the 2 premolars and the first molar. At the same time, three CONNECT abutments were connected to the implants (two regular 4mm and one wide, 5.7 mm platform to the premolars and molars respectively) and covered completely with cover screws. The final torque during implant placement exceeded 30 N/cm and all the CONNECT abutments were placed with a 30 N/cm final torque.

3 months post op, the uncovering of the CONNECT abutments followed using a split flap technique, moving the keratinised tissues towards the vestibulum in order to create more stable soft tissues surrounding the implants. The CONNECT abutments were covered with A-PRF. A full digital prosthetic workflow was followed and a screw-retained full contour Zirconia FPD was inserted a couple of weeks later.



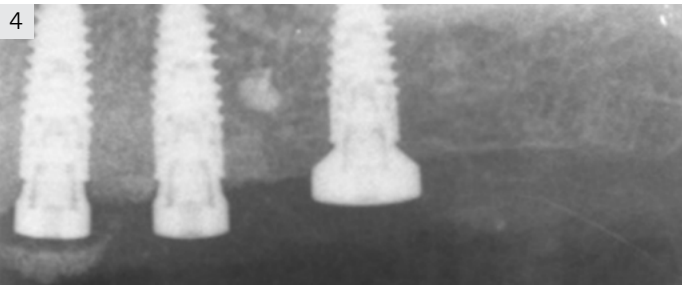
1 Initial situation with bone and soft tissue deficiency



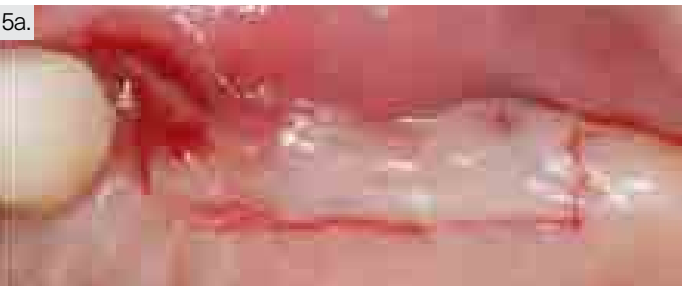
2 6 months after GBR with non resorbable membrane and mixture of xenograft and autogenous bone graft



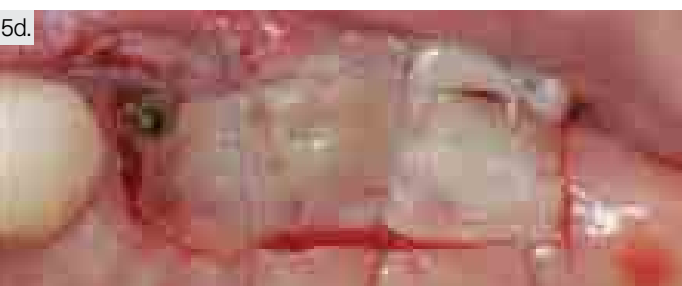
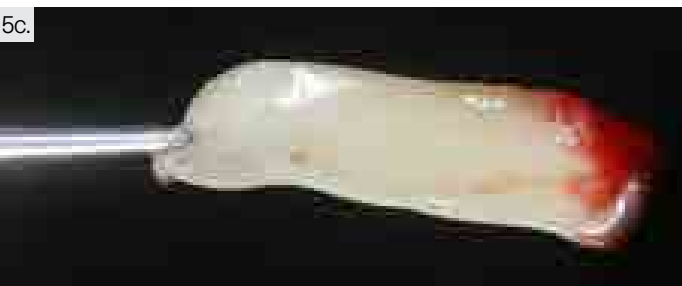
Tooth #24, 25, 26 : implant placement with simultaneous one time CONNECT abutment (#26 wide platform 5,7 mm)

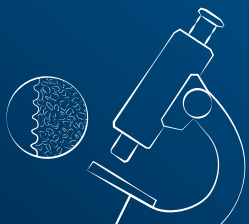


Radiographic image of implants and CONNECT abutments

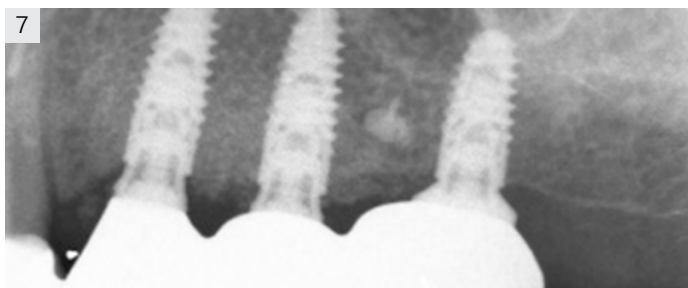


Apical reposition flap technique covered with PRF





Final clinical occlusal view after soft tissue maturation, 2 months after implant and CONNECT uncover



Final radiographic view