

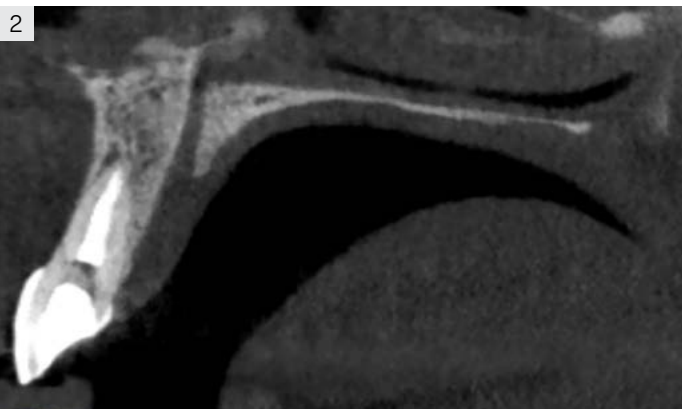


Rehabilitation of right central incisor after traumatic root fracture

Dr. Nuno Rocha Jorge, Private Clinic, Portugal



Horizontal fracture on tooth 11.
There is a noticeable fistula.



CBCT with visible horizontal
tooth fracture.



Alveolar bone preservation with
xenograft, and a free gingival graft
with the fractured tooth, bonded to the
adjacent tooth.



4



4 months after alveolar bone preservation. 6/0 monofilament sutures were kept in place due to the distance of the patient's residence from the clinic.

5



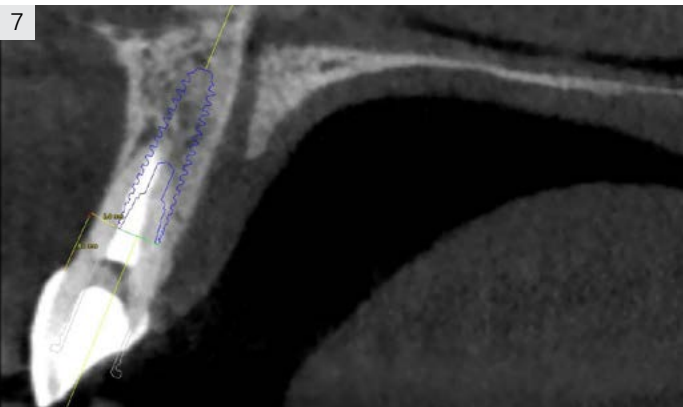
Frontal view.

6



Lateral view.

7



Planned implant position.



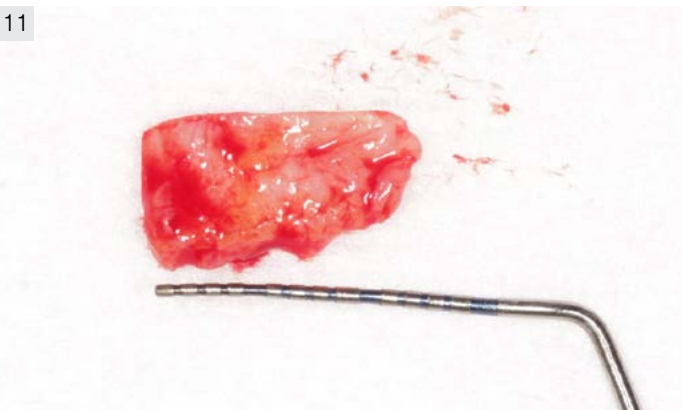
Checking of correct drilling direction.



C1 Implant installation.
(C1- 3,75x13 mm)



CONNECT abutment installation.



Connective tissue graft for improving tissue thickness.



CONNECT abutment in place with connective tissue graft.



Temporization with only one suture to hold the connective tissue graft in the desired location.



Occlusal view.



4 months postoperative. Removal of temporary restoration.



16



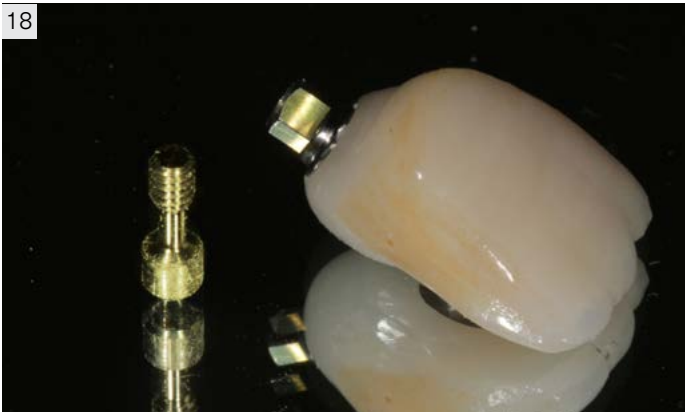
4 months postoperative tissue profile.

17



4 months postoperative tissue profile.

18



Final restoration.



19



And a glowing, happy patient.

